



# A World with a Future

---









B 7/24

# Better Homes

READ BY MORE THAN 3,100,000 FAMILIES  
MARCH 1947 • 25¢

## and Gardens



# WE ARE THE UNSUSTAINABLE WORLD

---

Transportation investments that favor the automobile











# WE ARE THE UNSUSTAINABLE WORLD

---

Transportation investments that favor the automobile

Use-based land planning





# WE ARE THE UNSUSTAINABLE WORLD

---

Transportation investments that favor the automobile

Use-based land planning

Excessive and single-mode infrastructure







# WE ARE THE UNSUSTAINABLE WORLD

---

Transportation investments that favor the automobile

Use-based land planning

Excessive and single-mode infrastructure

Public investment in buildings without expectations  
of collateral development



BOSTON CITY HALL



DARTMOUTH COLLEGE

NEW YORK

PEARLE VISION

# WE ARE THE UNSUSTAINABLE WORLD

---

Transportation investments that favor the automobile

Use-based land planning

Excessive and single-mode infrastructure

Public investment in buildings without expectations of collateral development

Private investment in buildings without expectations of collateral development



# WE ARE THE UNSUSTAINABLE WORLD

---

Transportation investments that favor the automobile

Use-based land planning

Excessive and single-mode infrastructure

Public investment in buildings without expectations of collateral development

Private investment in buildings without expectations of collateral development

Excessive consumption











# WE ARE THE UNSUSTAINABLE WORLD

---

Transportation investments that favor the automobile

Use-based land planning

Excessive and single-mode infrastructure

Public investment in buildings without expectations of collateral development

Private investment in buildings without expectations of collateral development

Excessive consumption

Over regulation



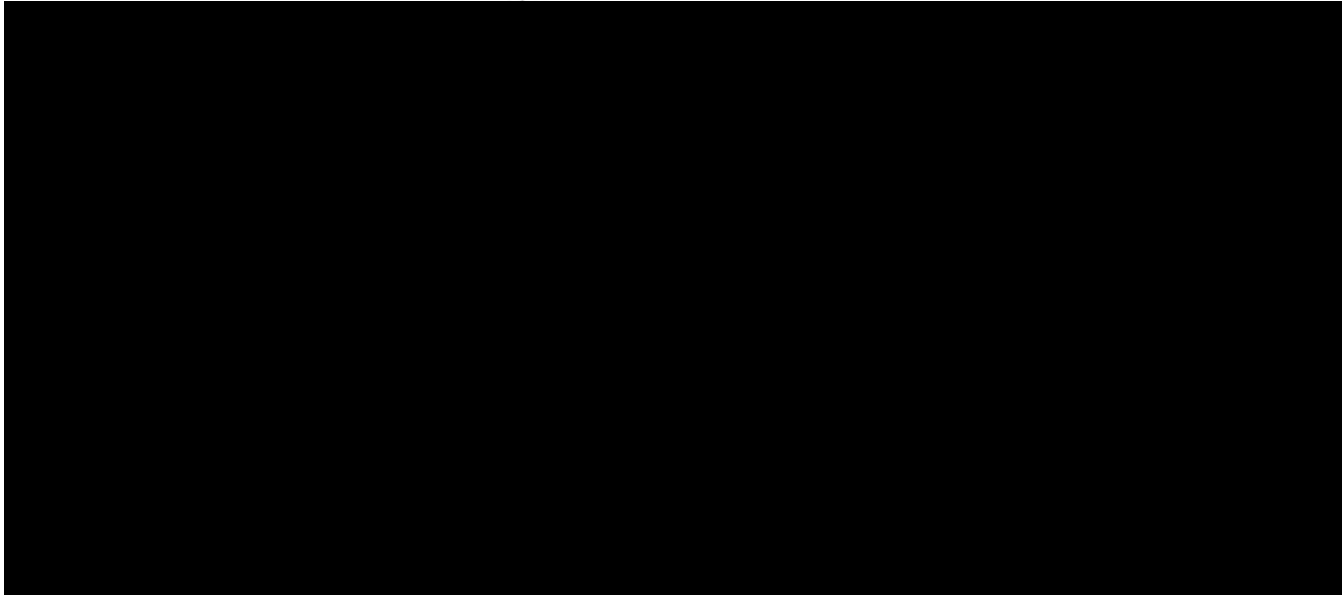




# Greenwashing

---

The rush to prove that what we have been doing all along was 'green' after all.

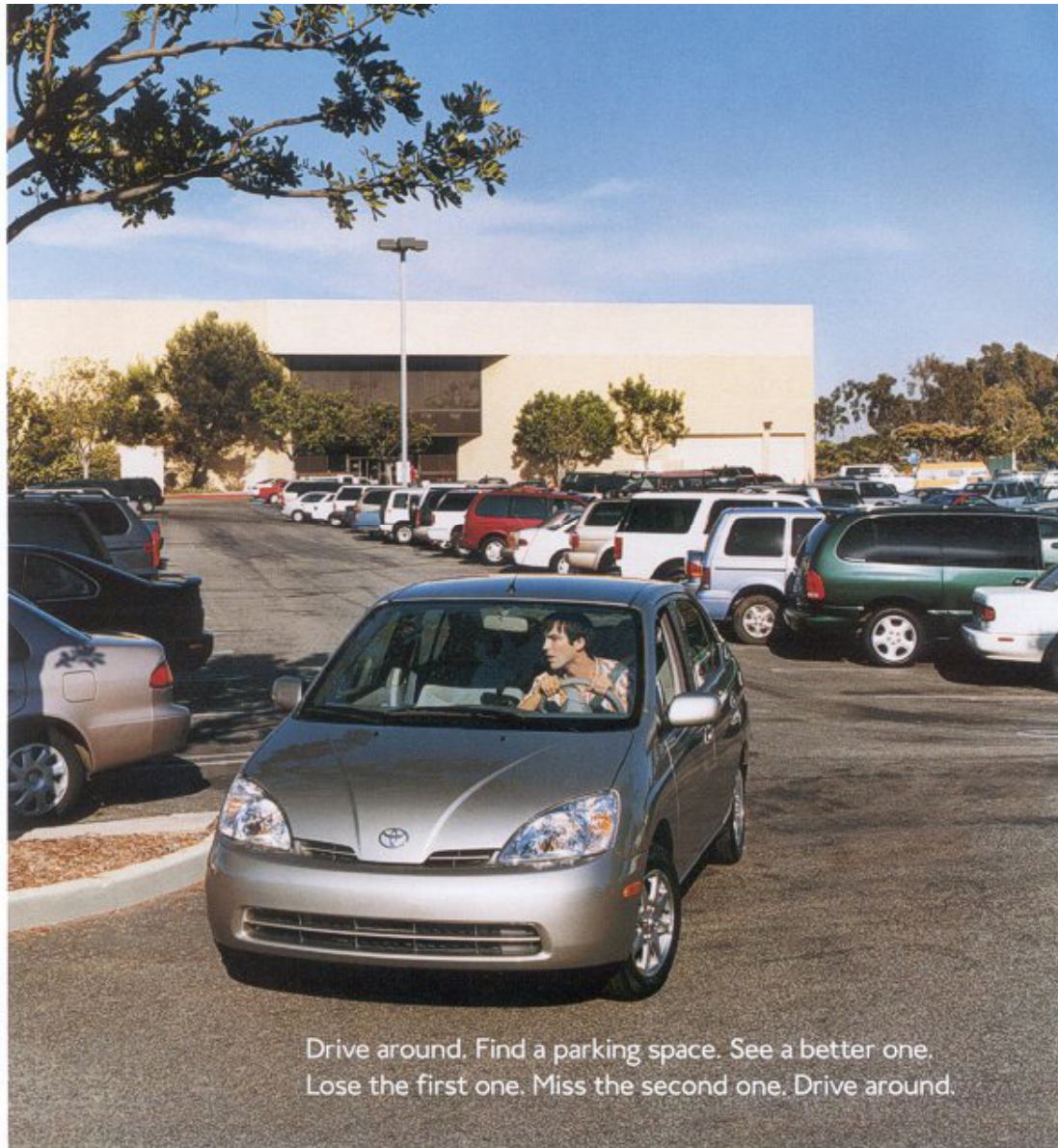


The New York Times Magazine

ECO-TECTURE







Drive around. Find a parking space. See a better one.  
Lose the first one. Miss the second one. Drive around.

The gasoline/electric hybrid Prius. It drives efficiently even when you don't. It combines a super-efficient gas engine with an electric motor that never needs plugging in. It converts the energy created during braking into additional power. It even comes with available GPS navigation. All of which makes Prius a smarter way to drive. No matter how you drive it.



52/45 MPG\* PRIUS | genius

You are here: [SmartPlanet.com](http://SmartPlanet.com) > [News](#) > [Food](#)

## Soil Association okays flying organic food



Channels: [Food News](#) Tags: [organic](#), [fairtrade](#), [airfreight](#)



# NOW 100% NATURAL.

CHECK OUT OUR TV ADS, NOW 100% NATURAL.

The famously crisp, refreshing taste of 7UP® is now better than ever, because it's been stripped of the artificial stuff found in most other soft drinks. Pick one up today.

PRODUCTS

JOIN US

[Privacy Policy](#) | [Terms of Use](#) | [FAQ](#) | [Accessibility Statement](#) | [Contact Us](#)  
[Text Site](#) | [Site Map](#) | [DietDrinkRecipes.com](#)

7UP is a registered trademark of Dr Pepper/Seven Up, Inc. ©2006 Dr Pepper/Seven Up, Inc



— Is **100%** recyclable

— Features a new label that's **30%** smaller

— Is made with **30% less** plastic than the average half liter bottle\*

— Easy to carry

— Is **flexible** so it's easier to crush for recycling

Get Noticed.

I-N-C

INTERNATIONAL CONCEPTS™





# Urbanism is the Most Effective Remedy

---

Return to traditional forms.

# Sustainable Design Principles



1. Connectivity



2. Placeness



3. Compactness



4. Diversity



5. Frugality



# Urbanism is the Most Effective Remedy

---

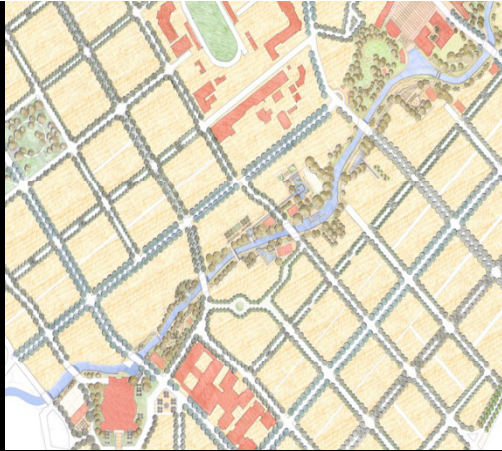
Seeding a civic process for change





# Public Process





# Urbanism is the Most Effective Remedy

---

A regional approach

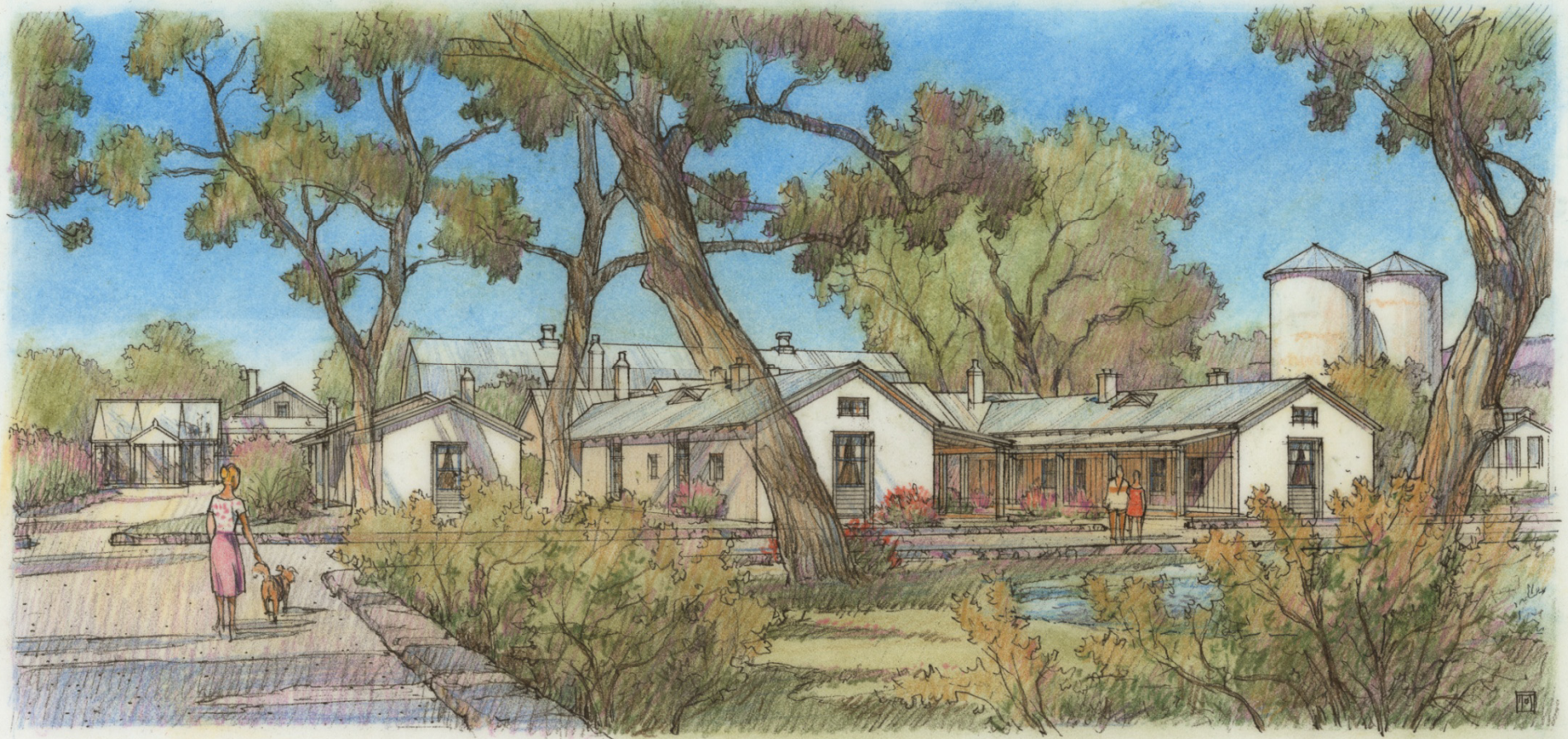




Rapid Bus - Suisman Urban Design













# Urbanism is the Most Effective Remedy

---

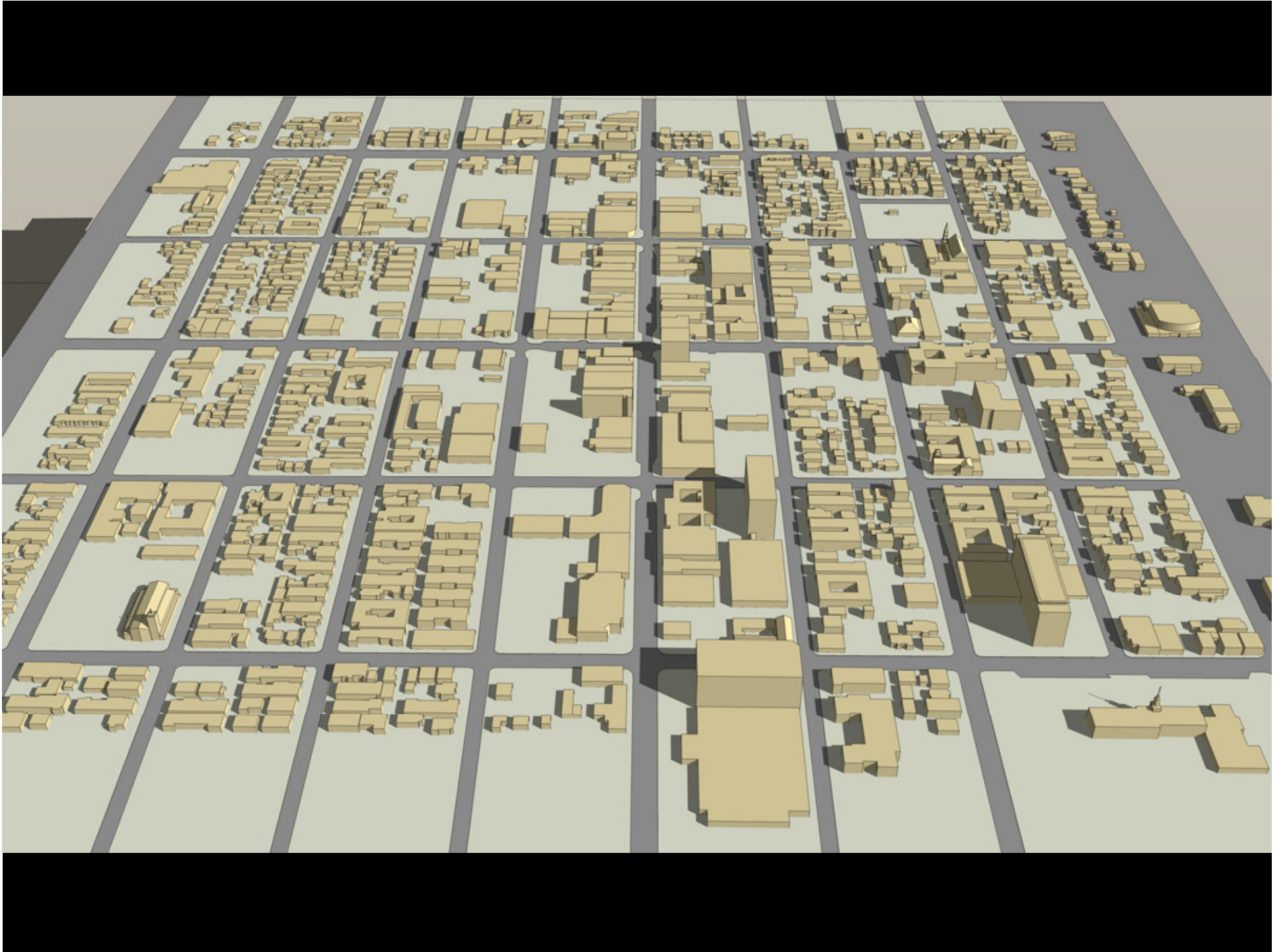
Repair and Infill

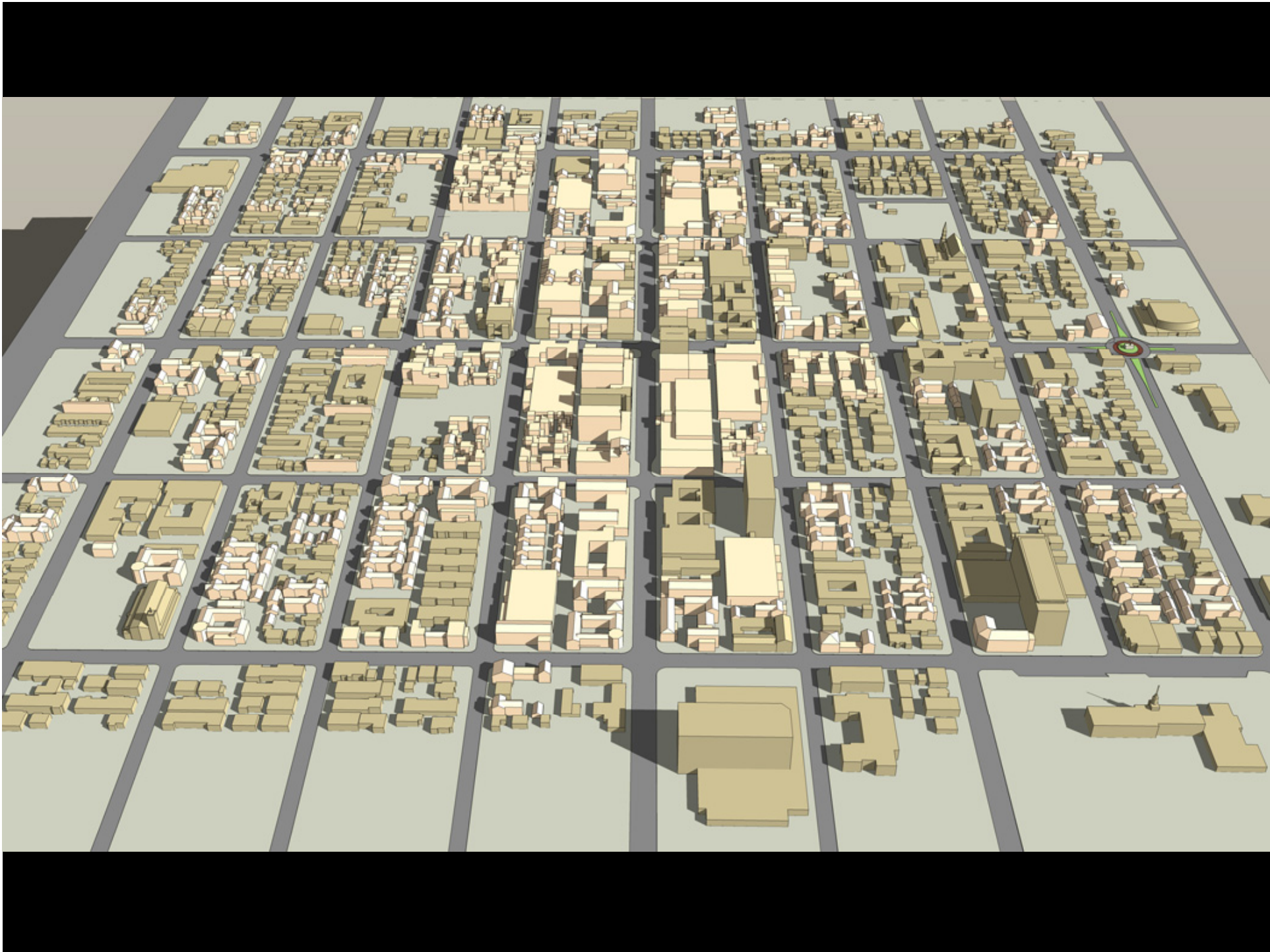


Beverly Hills Golden Triangle Enhancement, Moule & Polyzoides

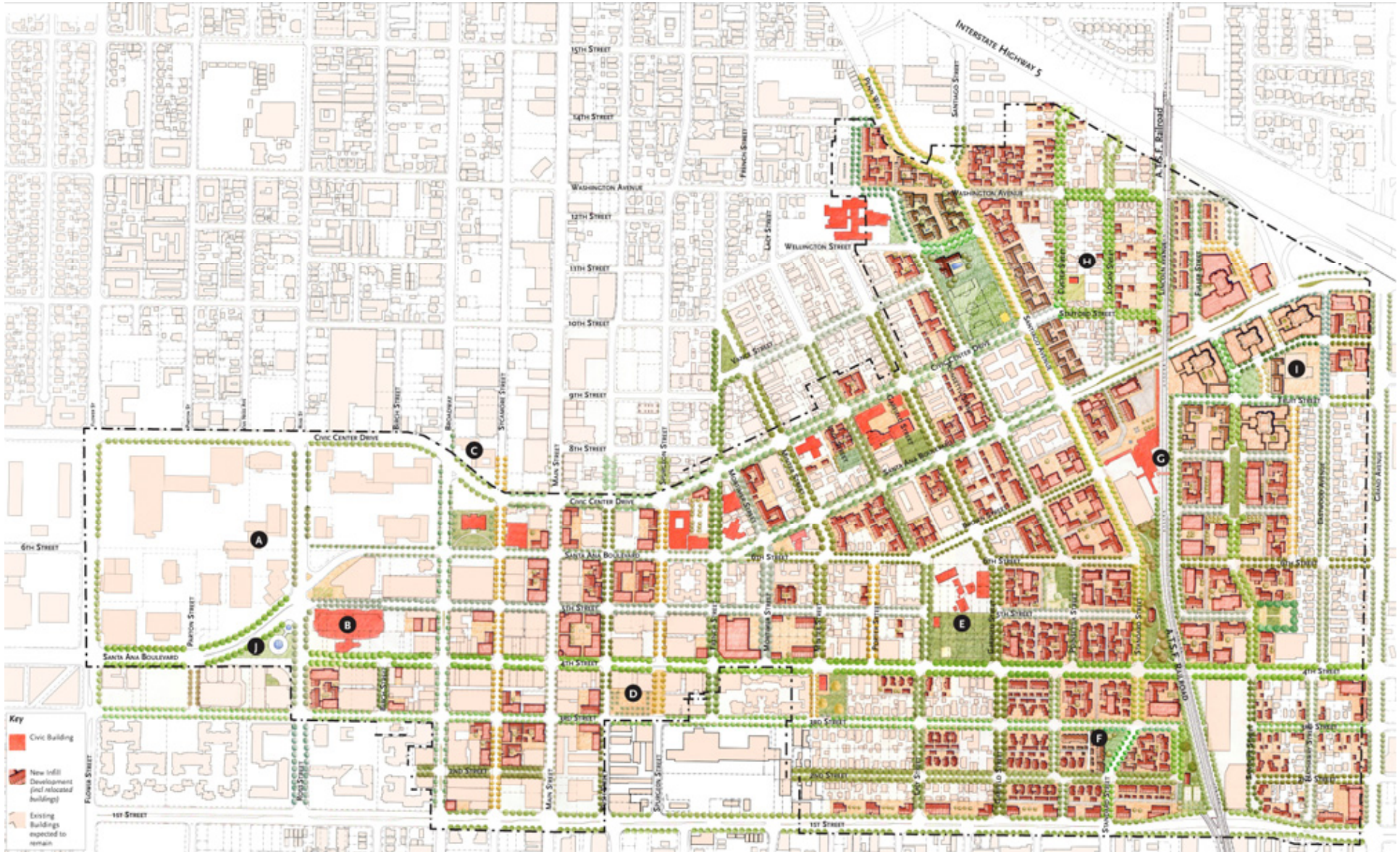


Beverly Hills Golden Triangle Enhancement, Moule & Polyzoides







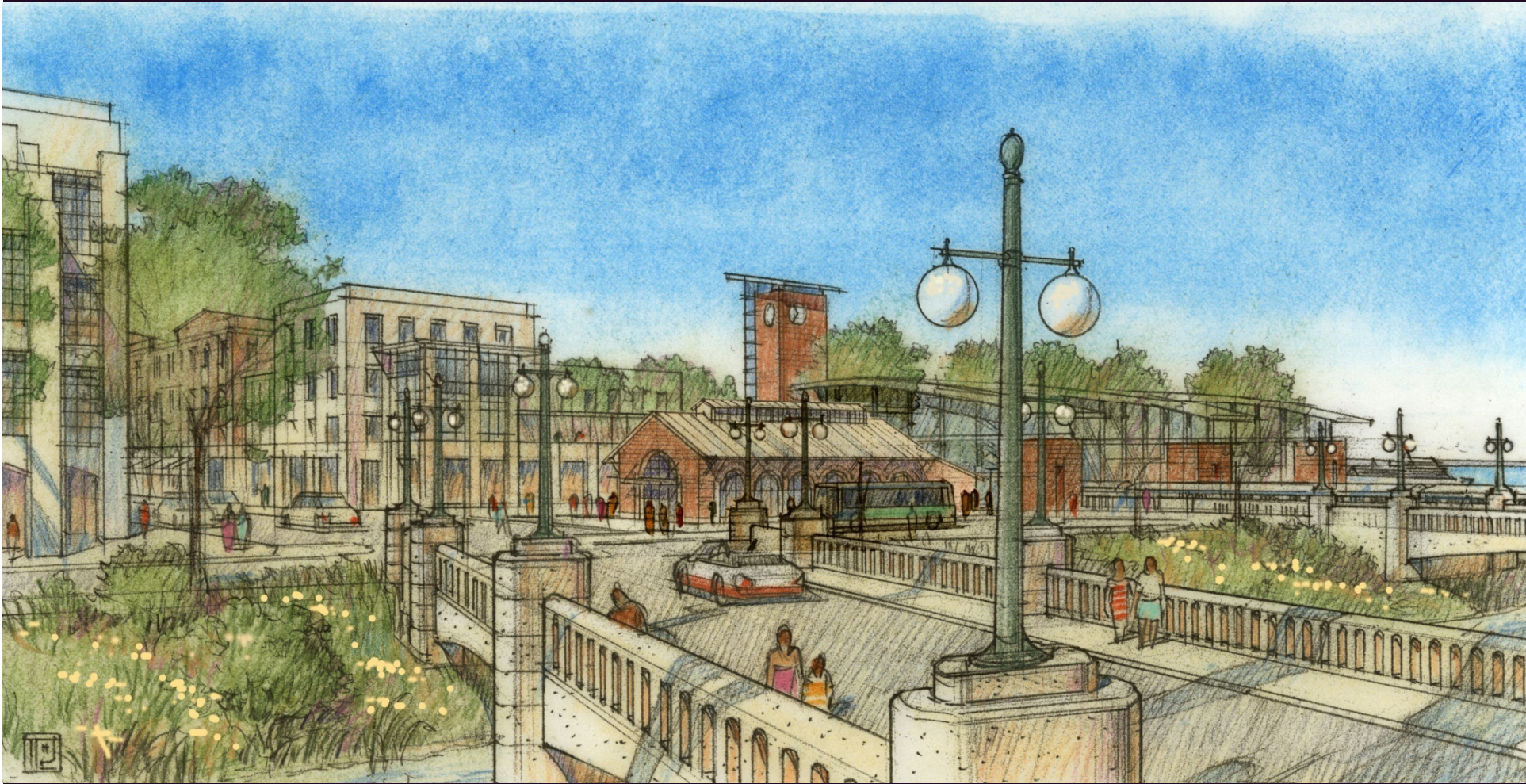


- Key**
- Civic Building
  - New Infill Development (and relocated buildings)
  - Existing Buildings expected to remain













# Urbanism is the Most Effective Remedy

---

Sustainable Building

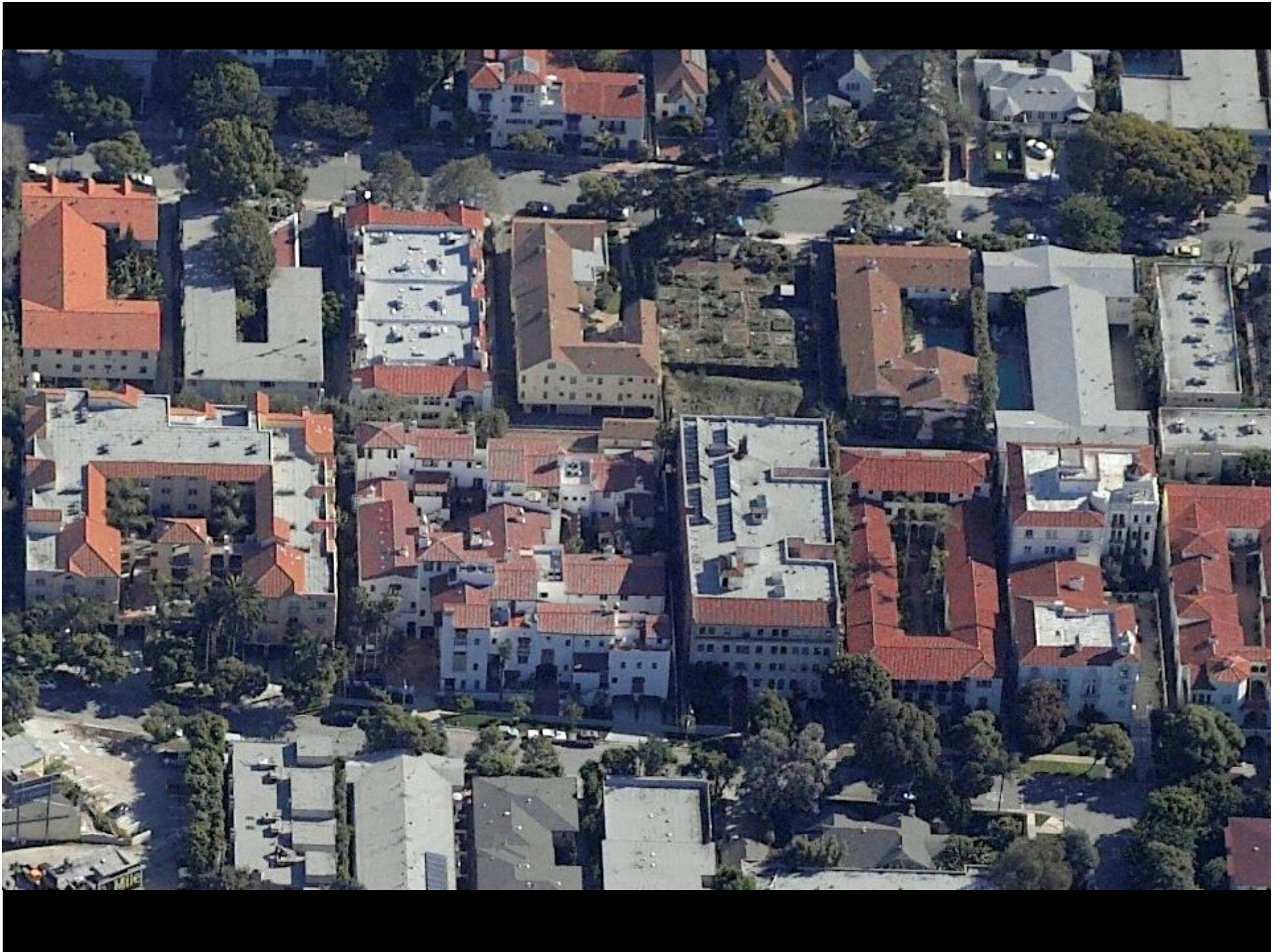






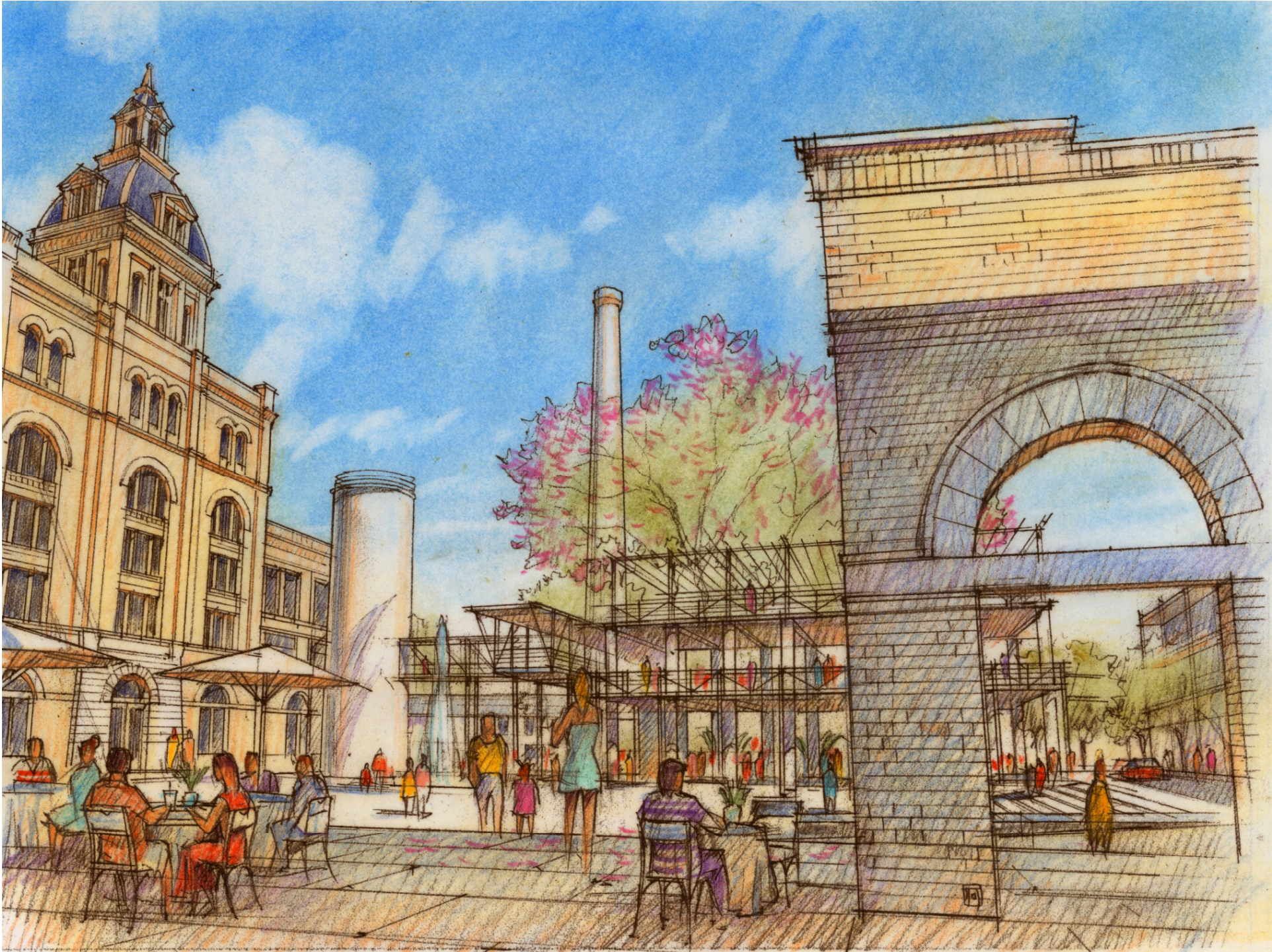


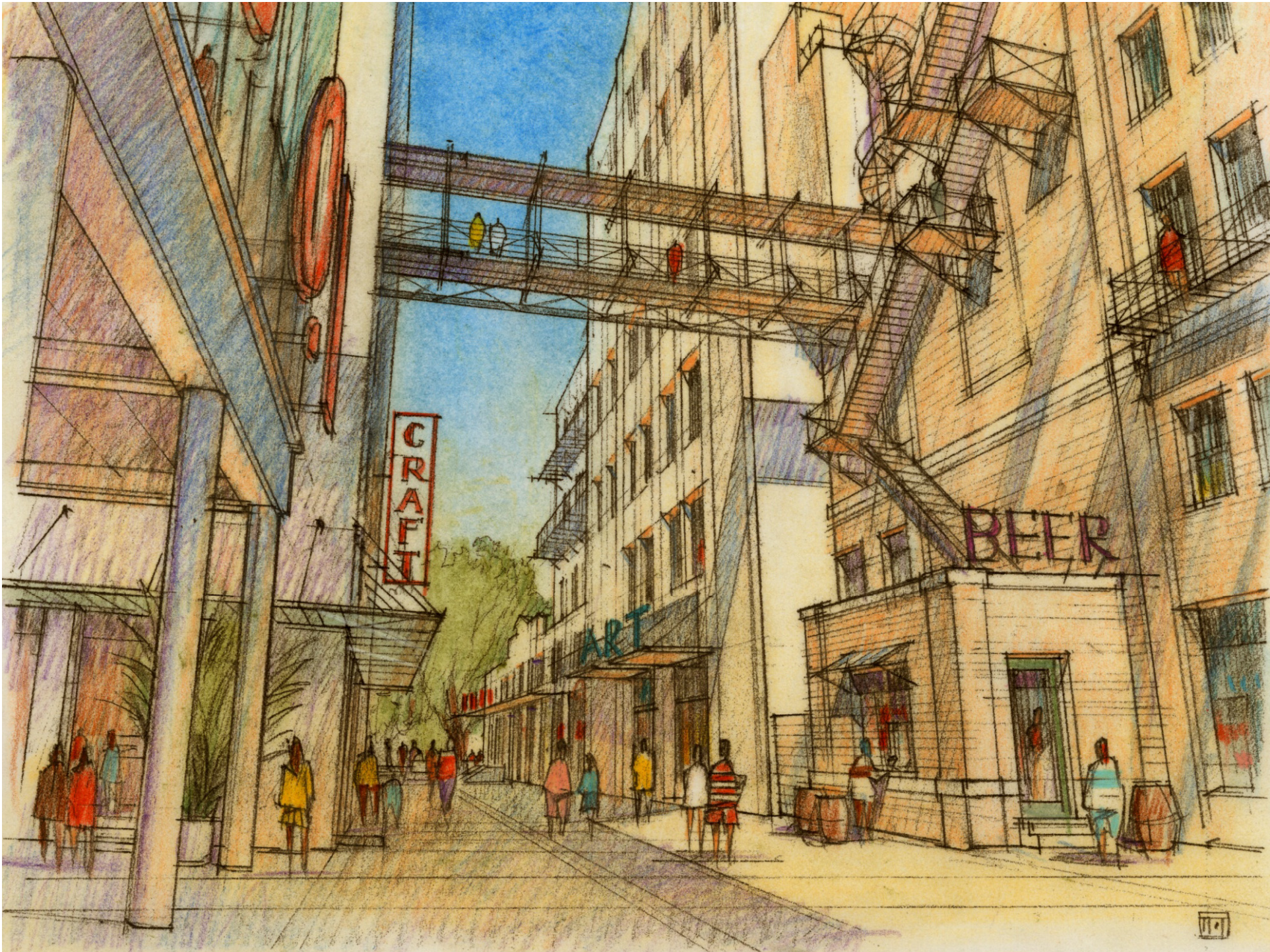










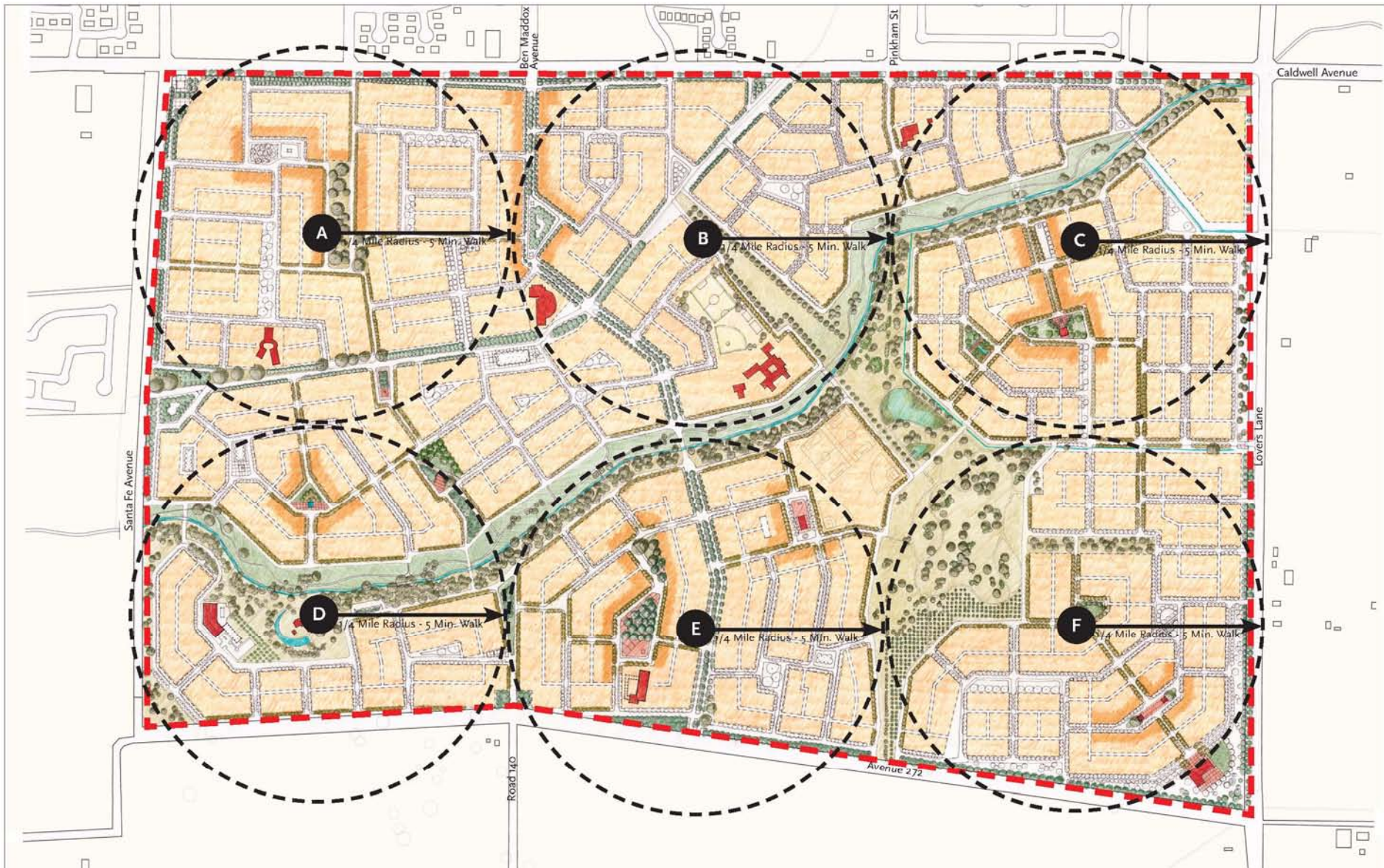




# Urbanism is the Most Effective Remedy

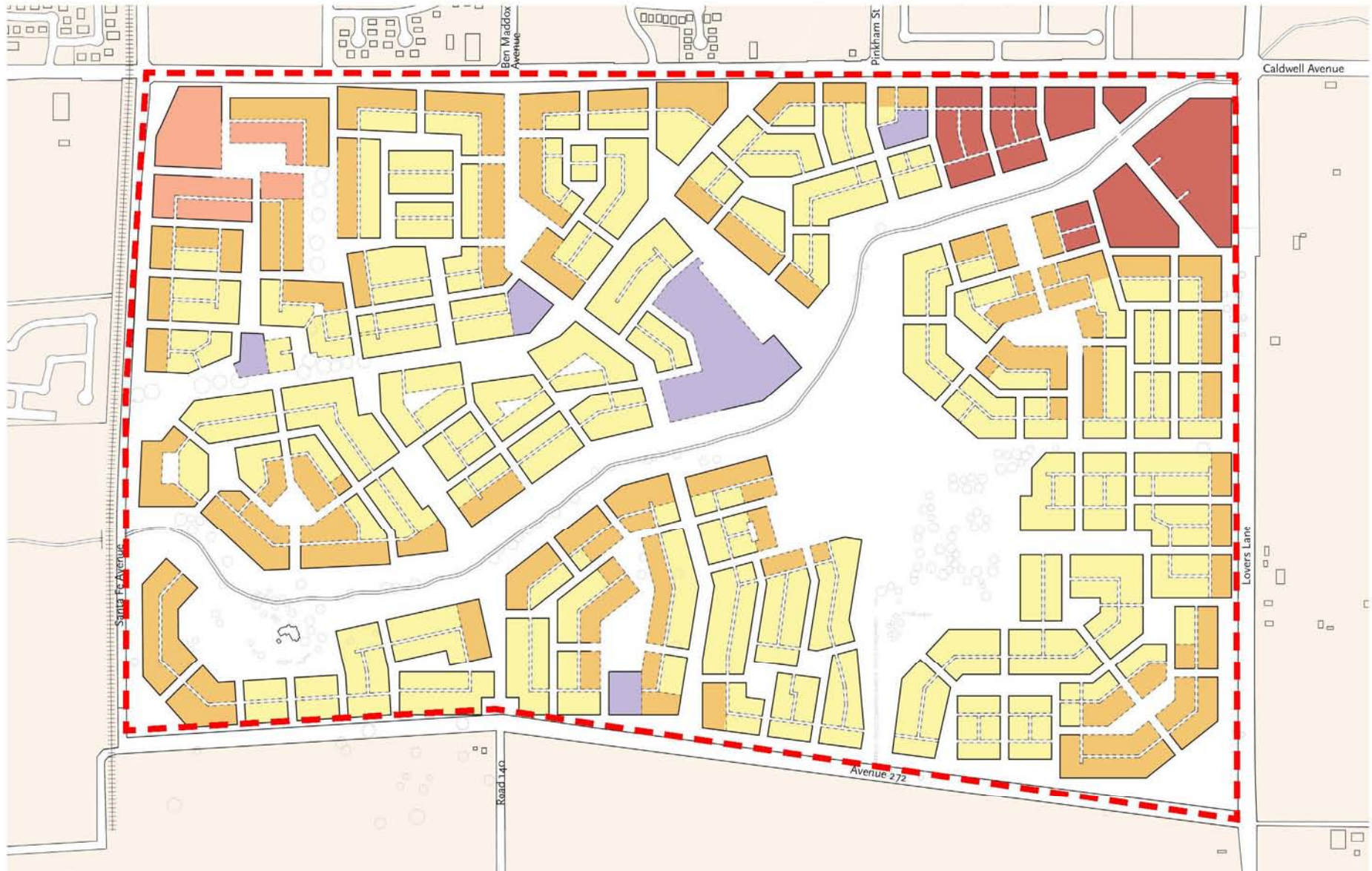
---

Visionary Plans & Form- Based Codes



## 1. Establish Neighborhood Walking-Sheds





## 2. Establish a Variety of Development Intensities







# Urbanism is the Most Effective Remedy

---

Superior environmental performance is sustainable  
planning and development

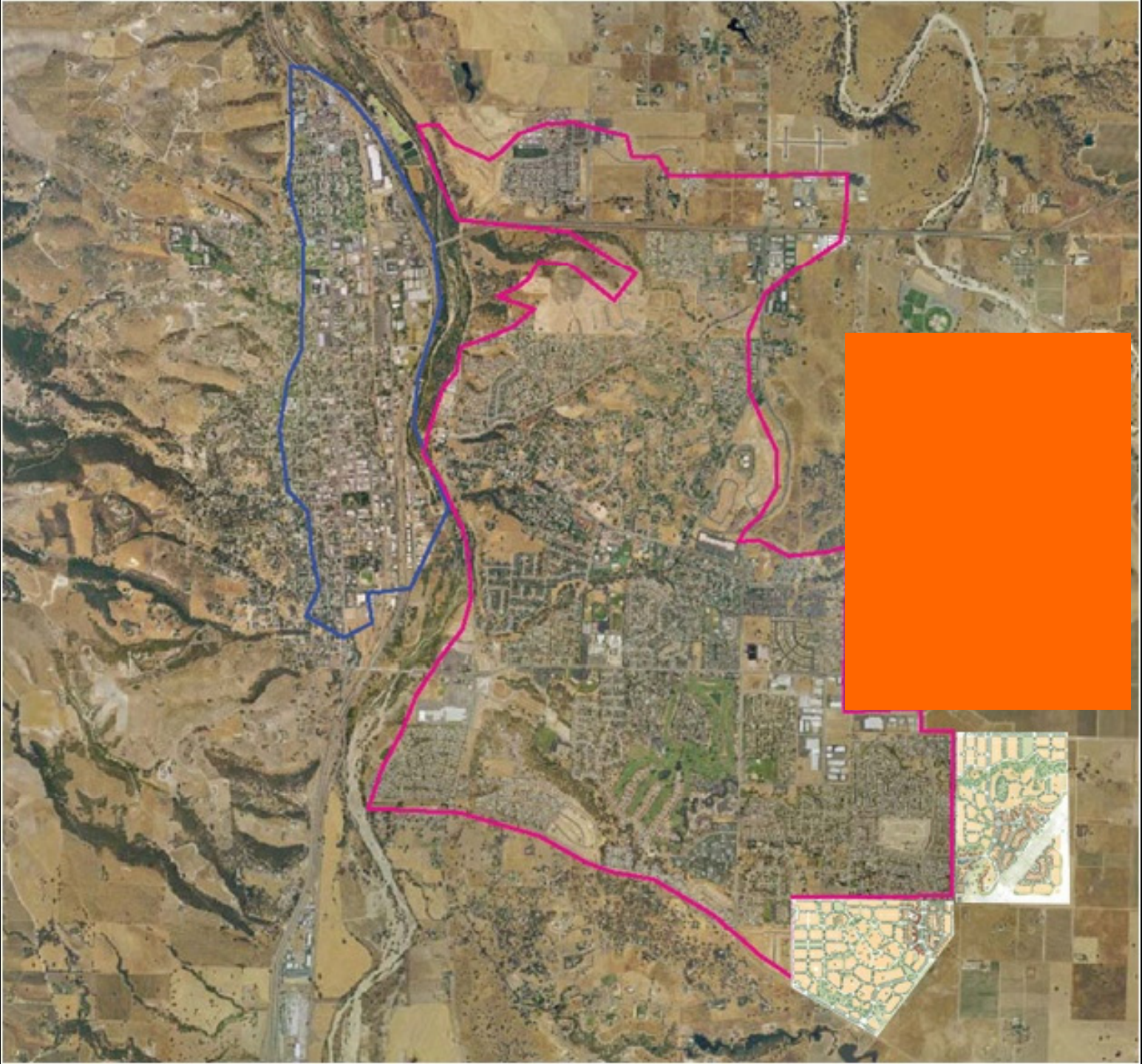
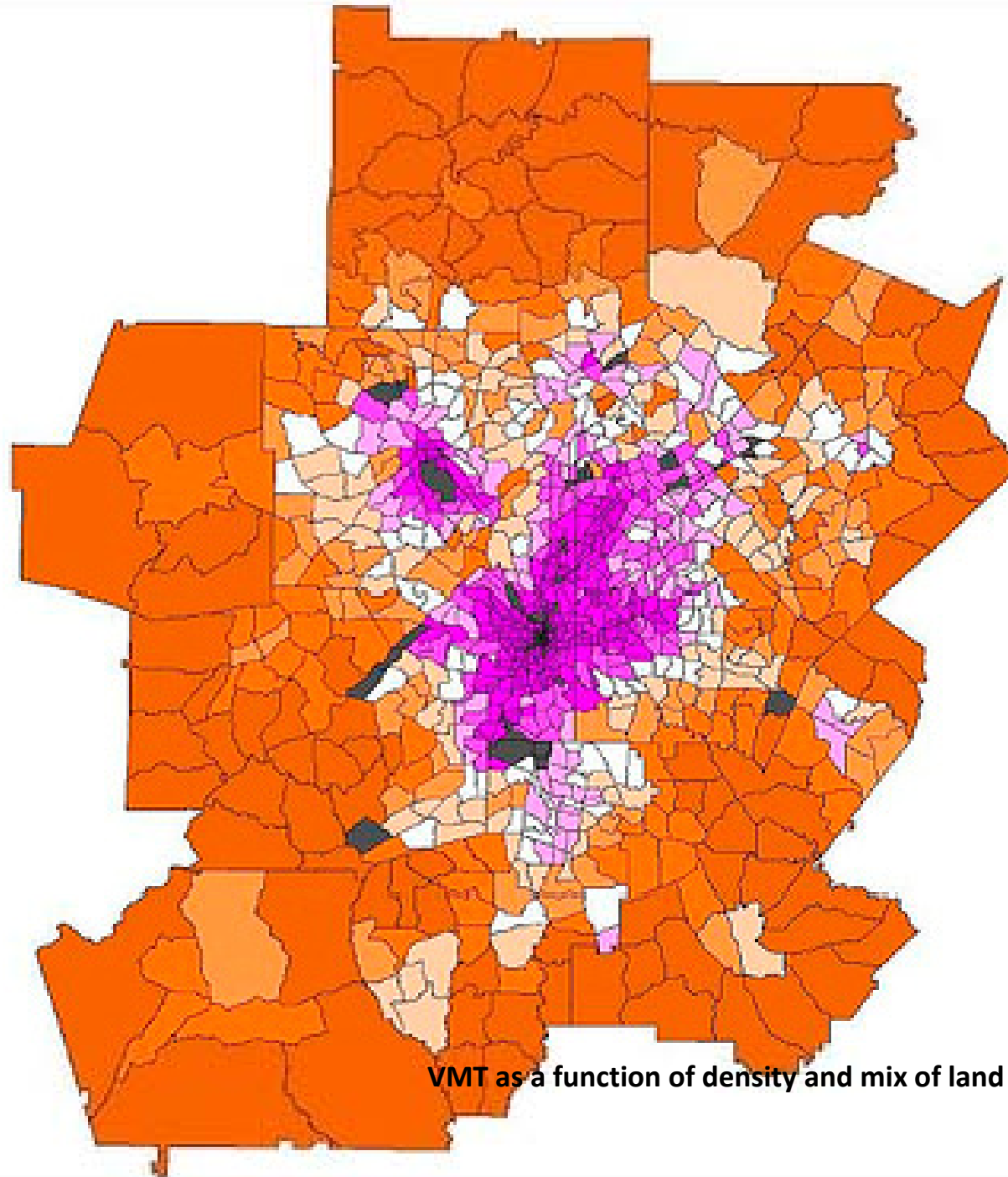




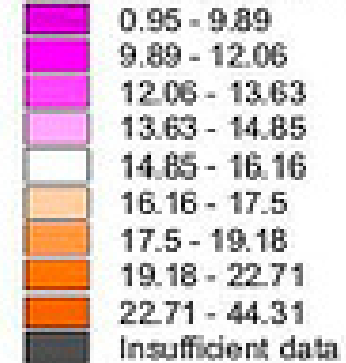
Figure 1

# ATLANTA REGION

Daily Per Capita  
Home-Based VMT  
(1998)



1998 HB VMT/Person/Day



March 10, 2000

CRITERION PLANNERS ENGINEERS Portland, OR	CR I T E R I O N
--	---------------------------------------



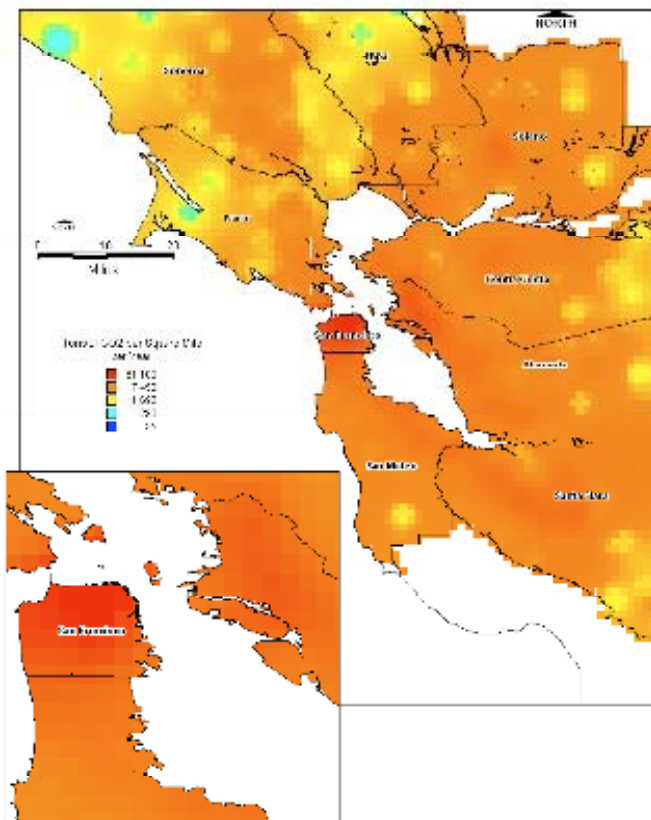


# Transportation and GHG emissions

GHG emissions by mode of transport in the US - 1990 and 2000

## By State

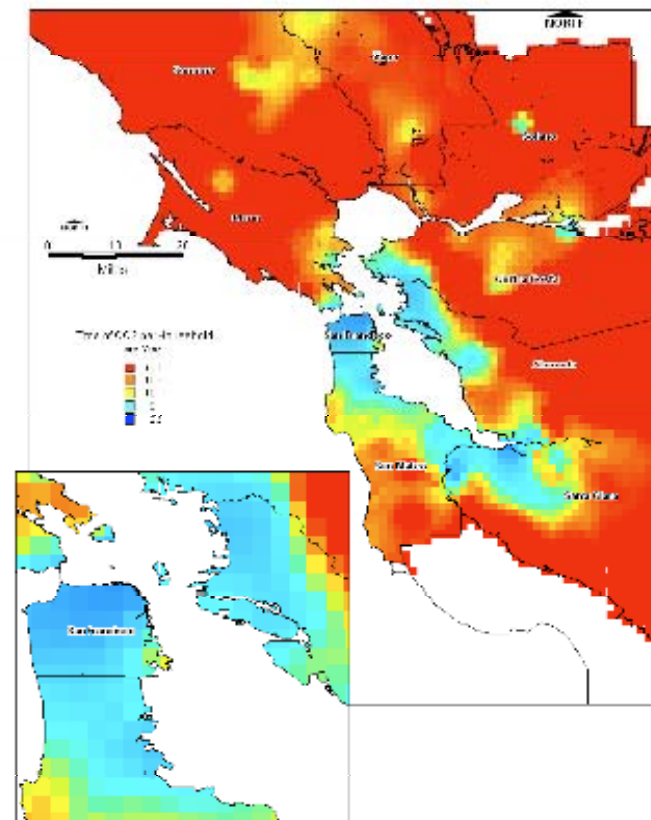
Cities produce large amounts of GHGs.



Data Source: US Census, California Dept. of Transportation, and Federal Highway Administration

## By City

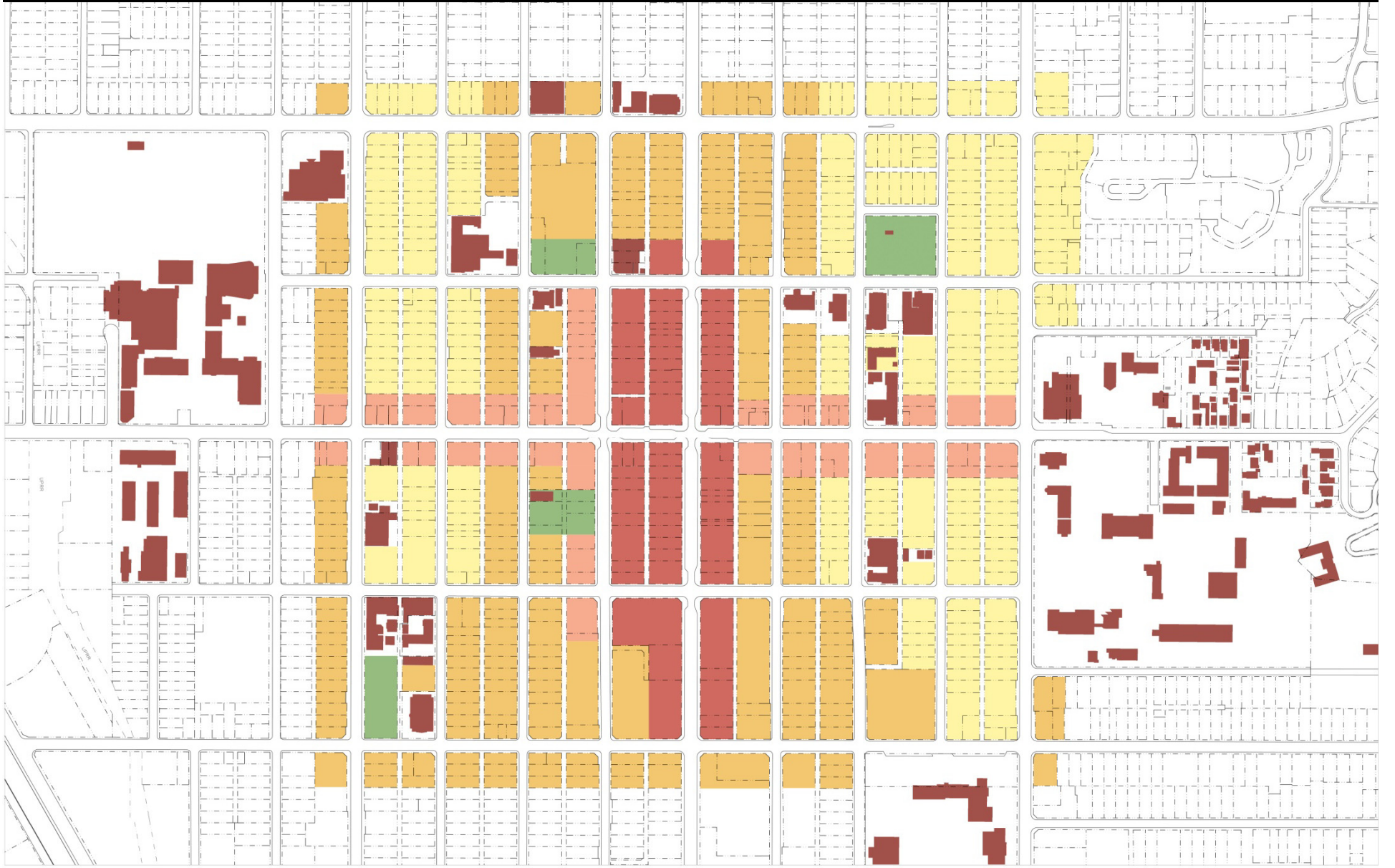
City dwellers produce relatively low amounts of GHGs.



Data Source: US Census, California Dept. of Transportation, and Federal Highway Administration

Each city produces more GHGs than the rural areas nearby







# Urbanism is the Most Effective Remedy

---

Impediments to CNU Dominance  
2010

10. University design education is segregated by profession.
9. Most architects cannot see beyond their commissions.
8. The building industry still trusts in sprawl.
7. No regional planning framework exists anywhere.
6. Imperious DOTs are traffic and parking obsessed.
5. Planning departments are focused on paper shuffling.
4. Anemic levels of public funding for new infrastructure.
3. A public process that is time insensitive.
2. Municipal electoral instability.
1. CNU still understood as an aesthetic movement.