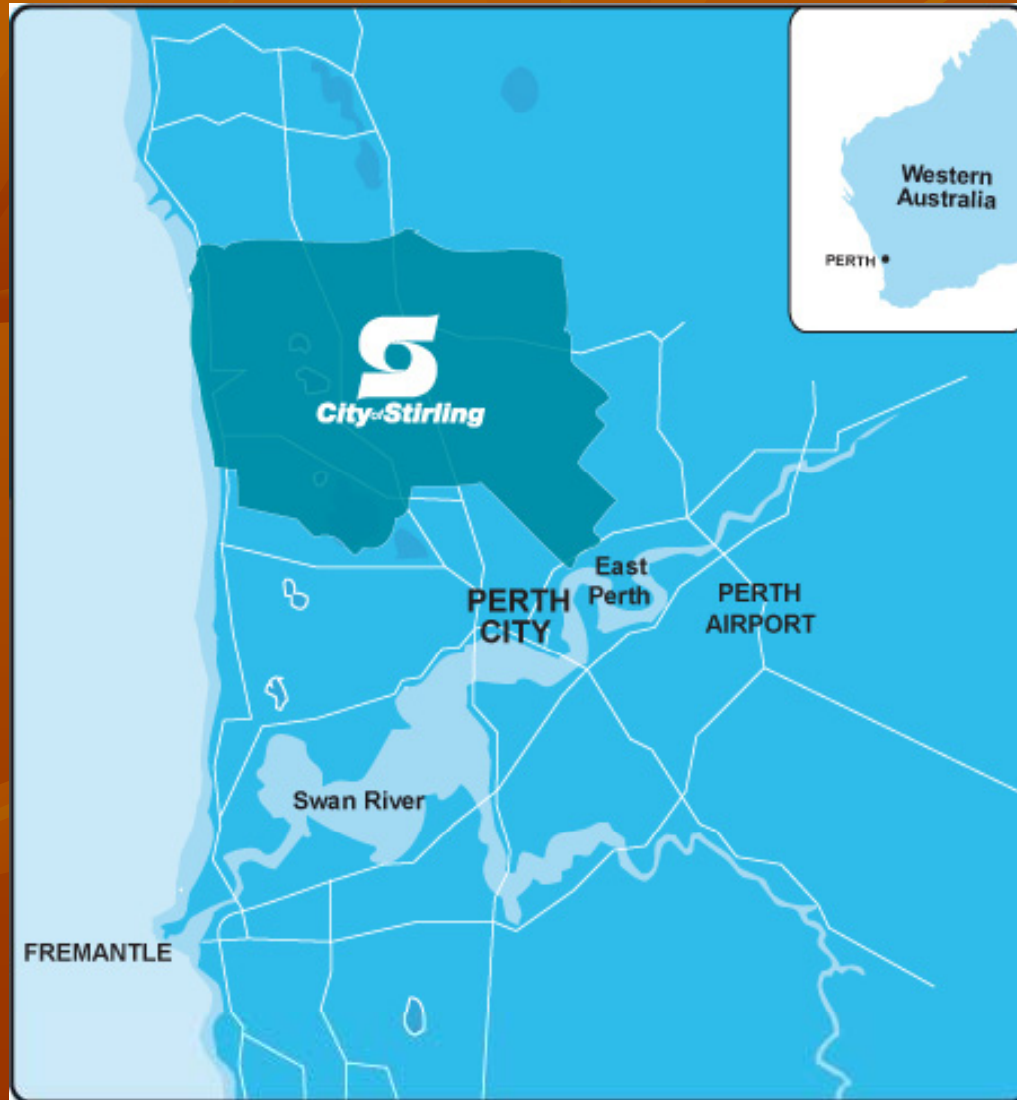
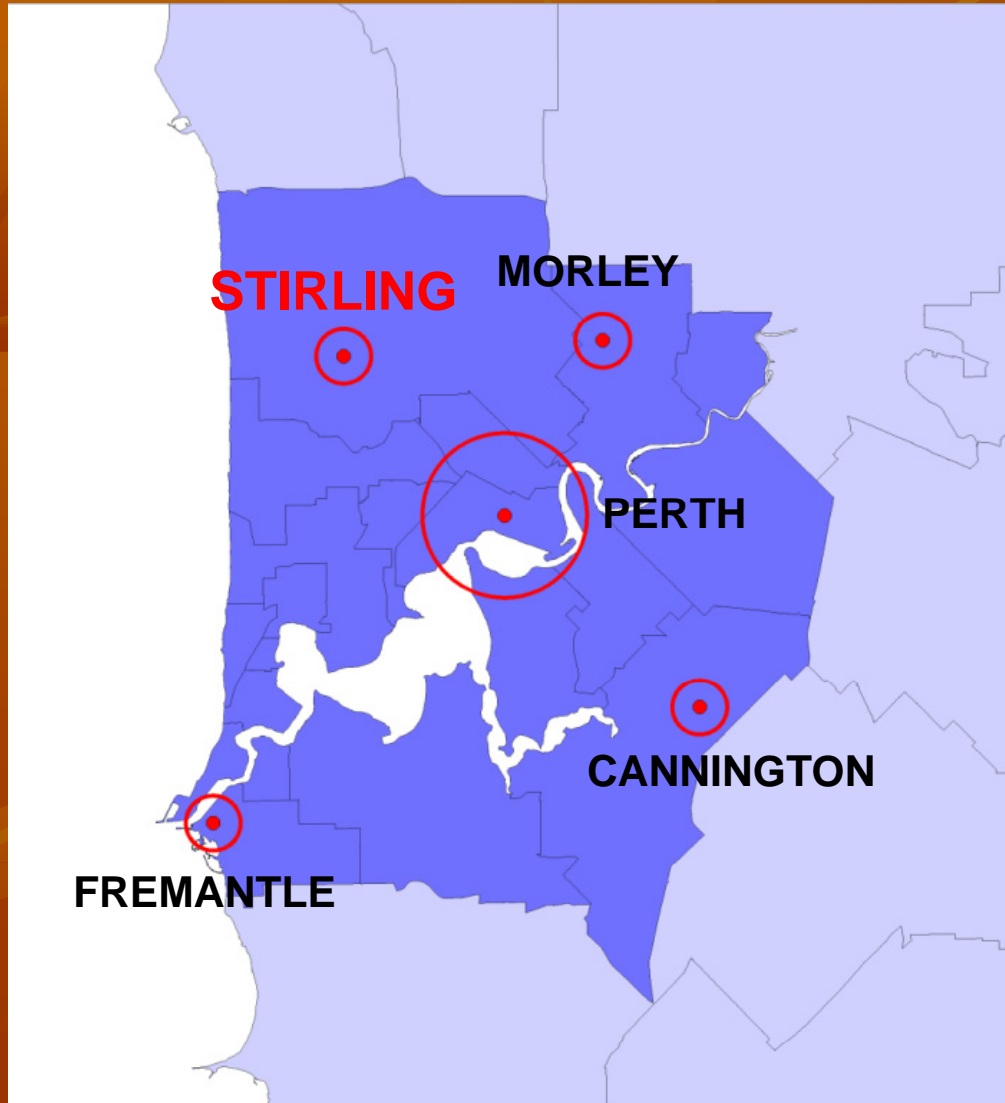


City of Stirling



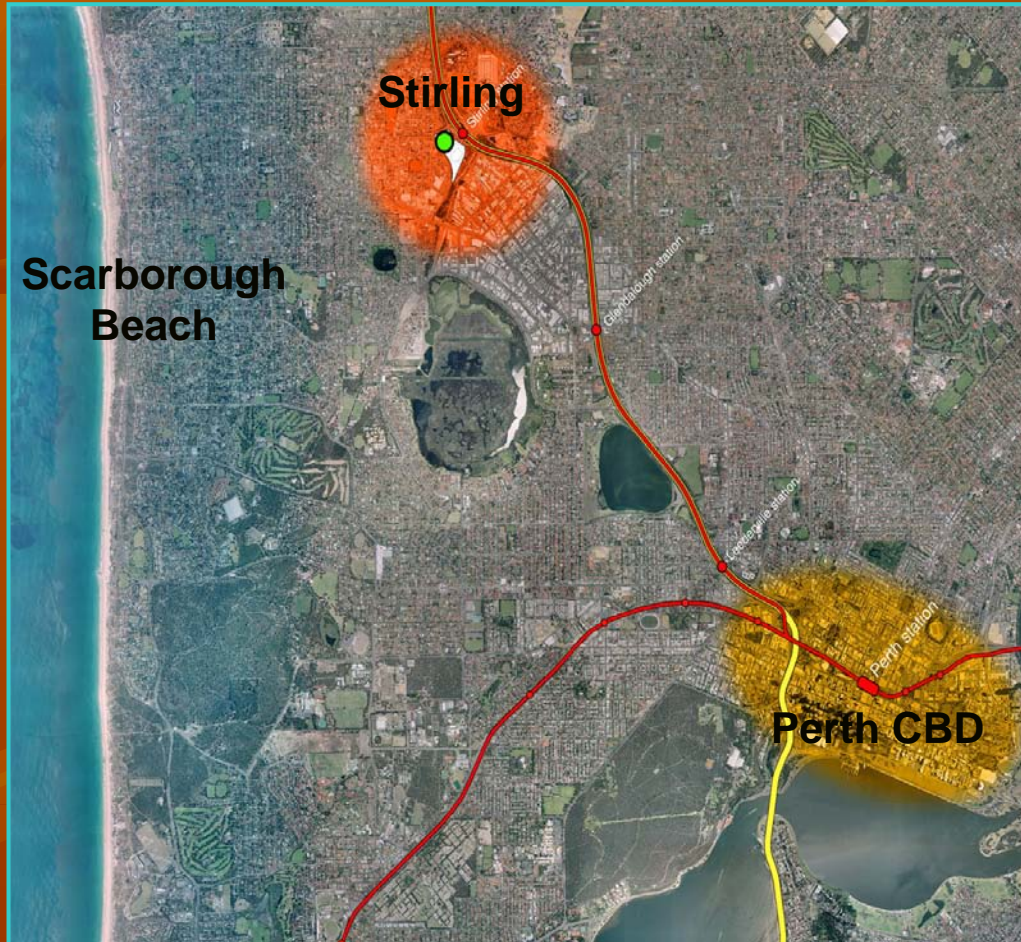
- Largest Local Government in Western Australia
- Population of approx 200,000

Regional Context



- One of four Strategic Regional Centres in the Central Sub Region;
- Need to accommodate an additional 300,000 people and 150,000 jobs in the next 20 years

Regional Location



- Closest major centre to CBD – 7 minutes
- 2nd largest employment area – 35,000 jobs
- Freeway and rail links to CBD
- Between CBD and Ocean

Background



Place of trade

Freeway to
Balcatta Rd

Osborne park
lakes still
proving some
food

Market
gardening
displaced

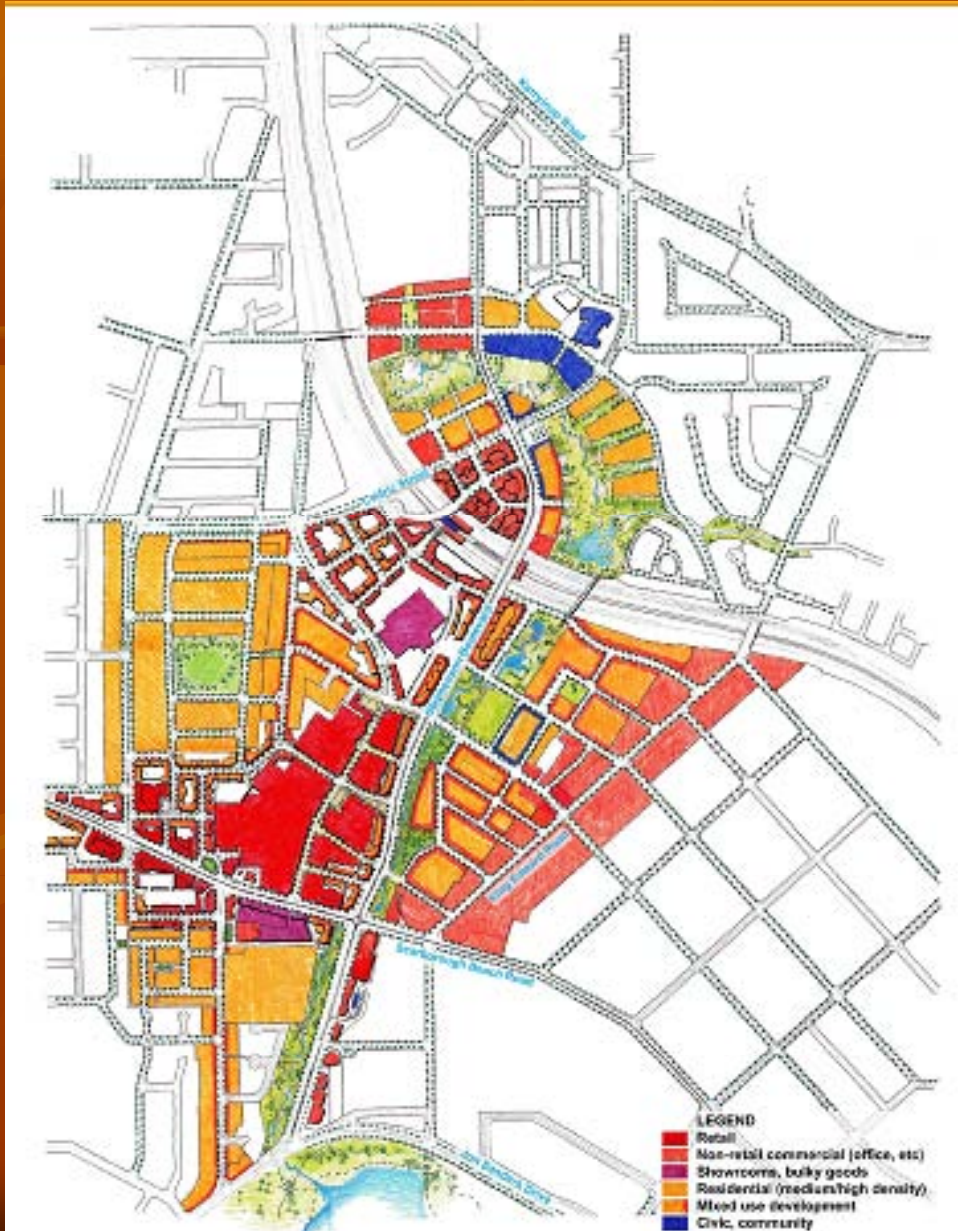
Open water
created in
Herdsman lake

1983



- Rubbish tip filled lake in early 60's;
- Freeway constructed in 1985;
- Rail constructed in 1992;

A Concept - Still under development



- Perth's Second CBD
 - 30,000 jobs; and
 - 25,000 residents;
- 350 hectares total area;
- State & Local Govt vacant land 50 hectares;

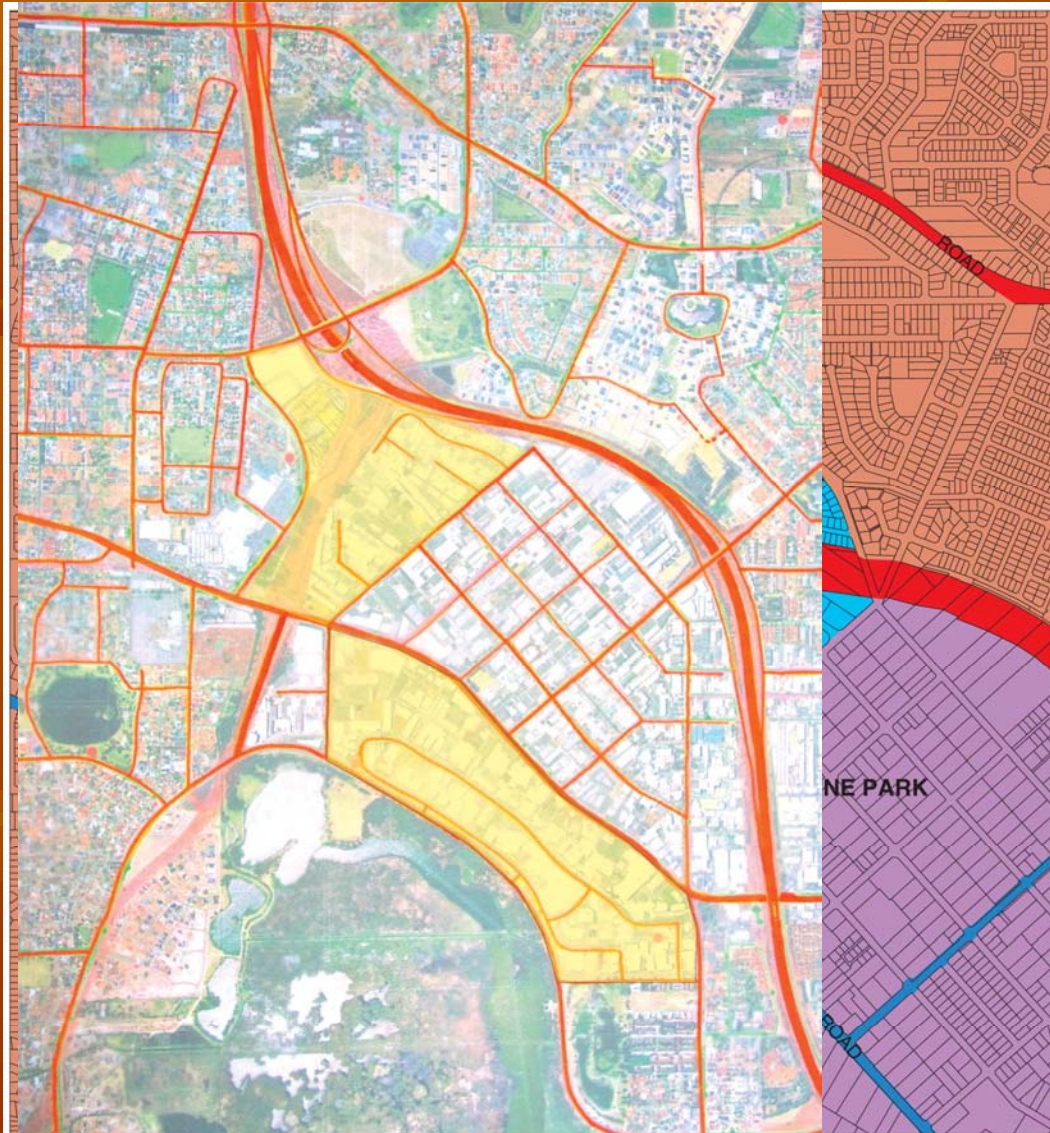
A Concept - Still under development



Station Concept



Challenges – Road Network



- 2 Freeway Reserves;
- No grid pattern

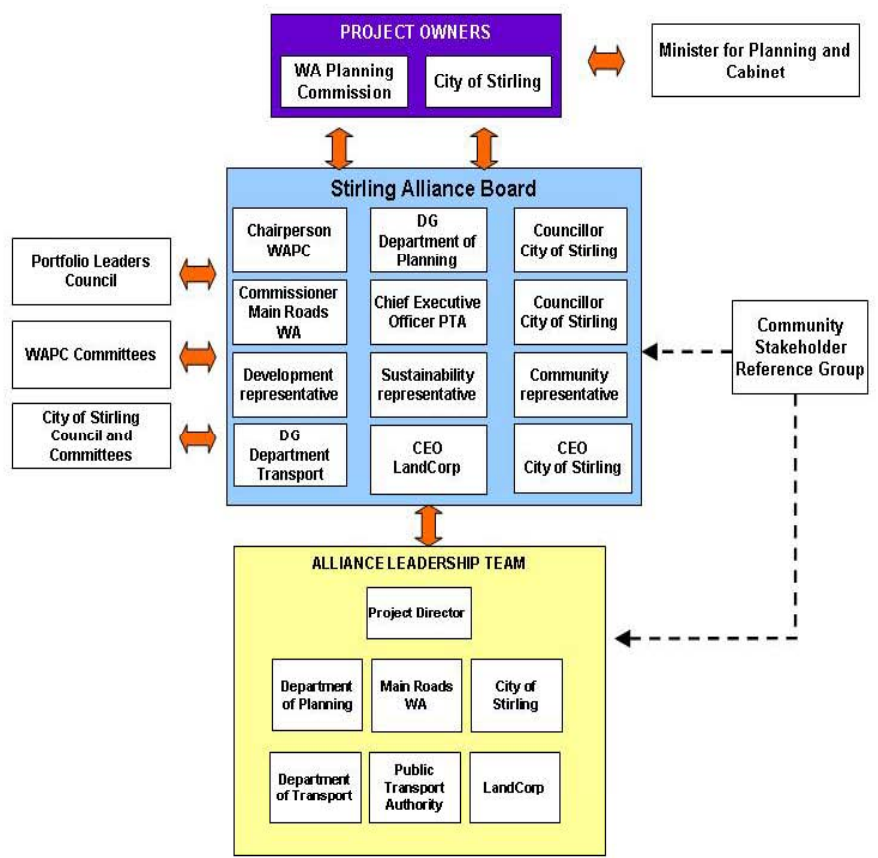
Challenges – Road Network

- 2007 & 2008 two Enquiry by Designs held;
- 2 years of talking – no resolution;
- Paralysis of Govt Agencies to resolve 40 year old issue;
- Couldn't make any decisions without resolution;
- Needed new Governance Structure.



Challenges - Planning Governance

- 2007 - First time Alliance model used in Australia for a planning project; and
- Creation of Board with CEO's of major Dept's first in W.A.



- Main Roads WA;
- City of Stirling;
- Dept of Planning;
- Landcorp;
- Public Transport;
- Community;
- Business; and
- Sustainability.



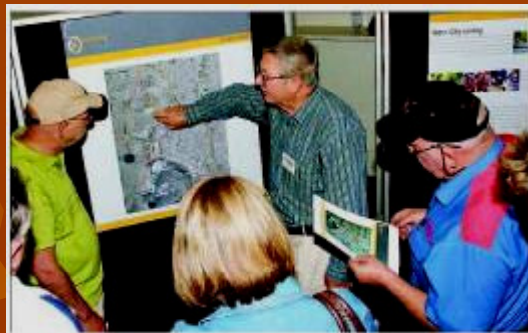
Challenges - Planning Governance

- **Other Governance Structures were considered, including:**
- **Redevelopment Authority (2- 3 years);**
- **Changes to Planning & Development Act (1 – 2 years);**
- **Decided Alliance was the best Governance Structure in the short term;**
- **In the long term other structures may be investigated, depending upon legislative changes.**

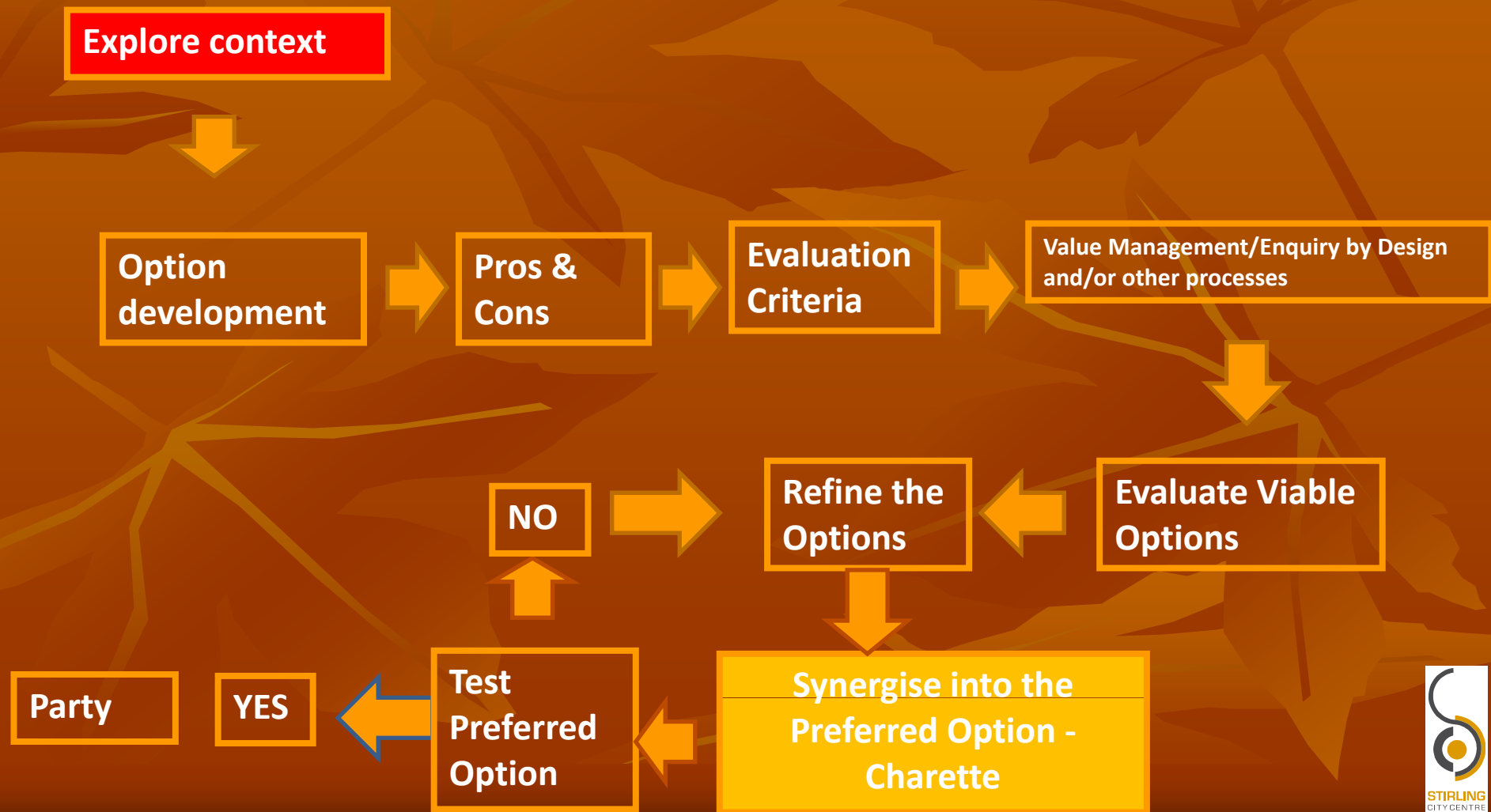
Breakthroughs

Transport Workshops

- After the Alliance was formed the first task was to resolve the problem of transport / land use integration;
- The team had just completed the 7 habits culture training so there was no better time to seek a win/win solution; and
- Alliance required a process to develop a win/win solution that all parties would be happy with.

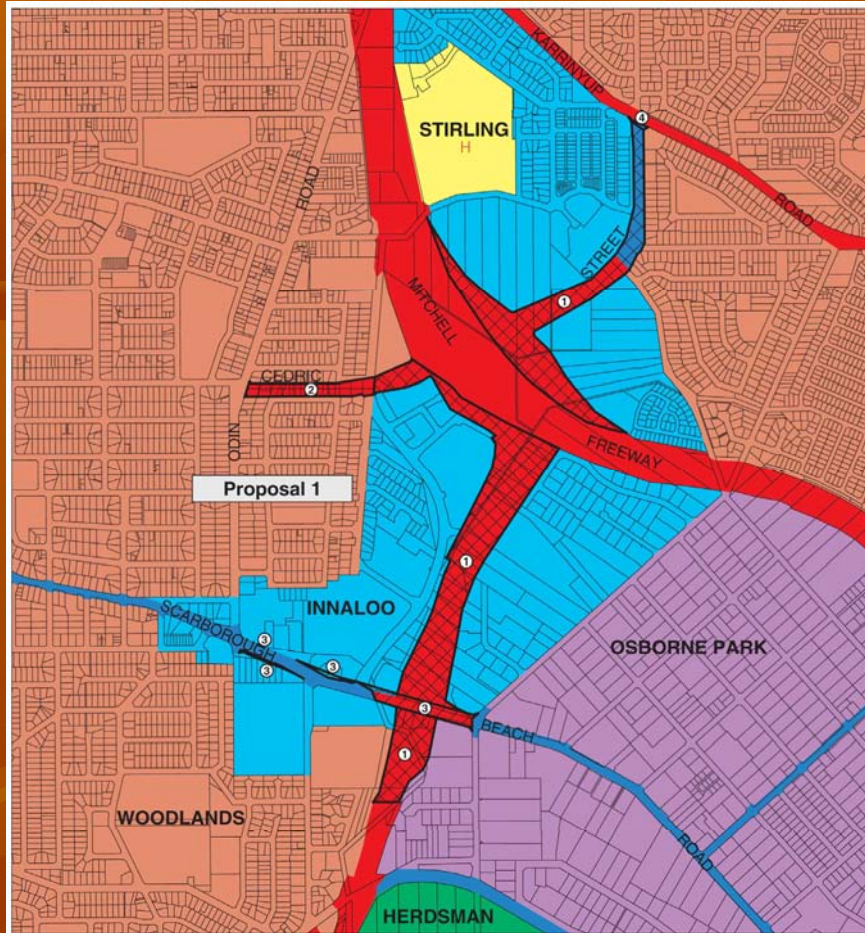


Breakthroughs Transport Workshops

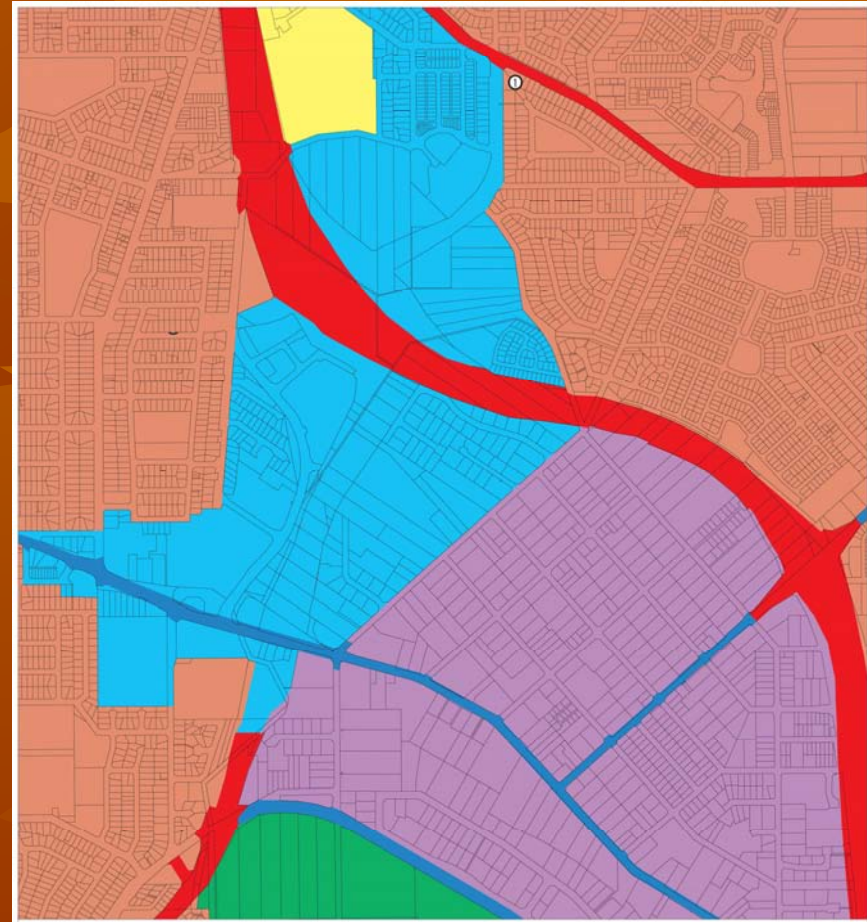


Breakthroughs 2008

Regional Zoning



Old Zoning



New Zoning

Challenges – Westfield



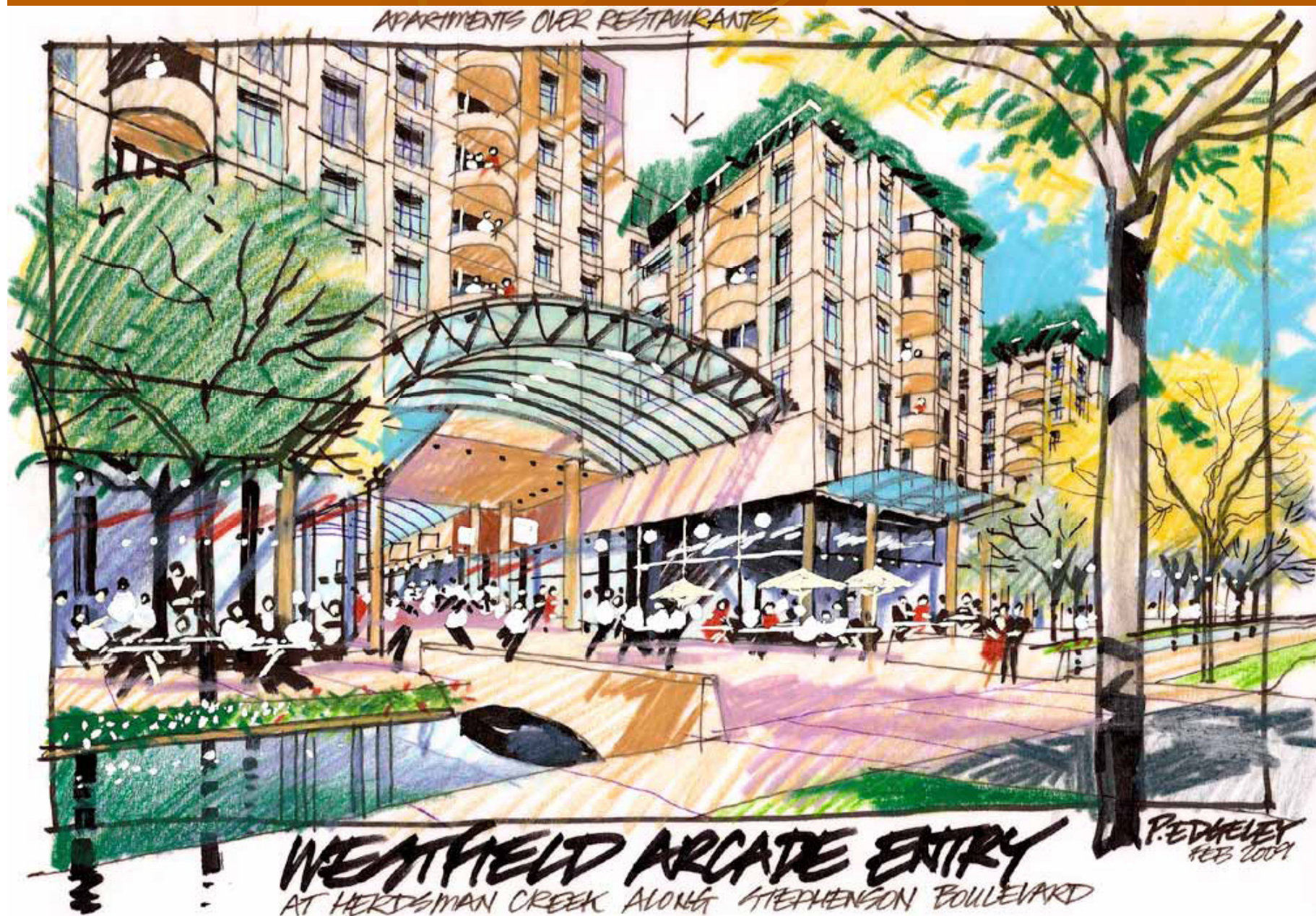
- 2005 – Lodged application to double centre to over 100,000m² retail
- In big box format
- Close local road
- Refused By Minister for Planning

Challenges – Westfield



- Enquiry by Design Workshop;
 - Re-align road on Westfield Land
 - Main Street format
 - Mixed Use – residential & office
- 5 years on and 3 Westfield development managers later;
- Close to agreement on all issues; and
- Now have timetable until August to resolve all remaining issues.

Challenges – Westfield



Festival of Ideas 2009



- 6 day Charette;
 - Over 1000 people;
 - Created a sense of excitement from all stakeholders;
 - Set vision; and
 - Tried to develop detailed concept plans for various precincts.

Challenges – Local Road Network



Challenges – Community Engagement

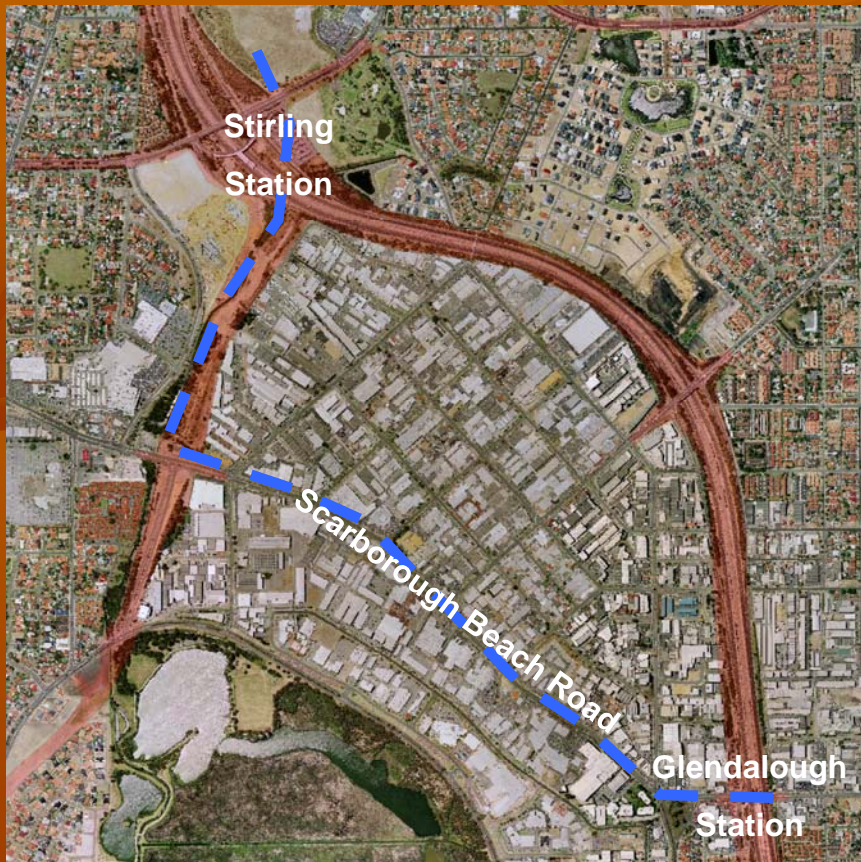


- After Festival of Ideas 400 people signed petition opposing new road connections;
- Spent 6 months meeting every Thursday and Saturday to work on road and density solutions;
- Have preliminary agreement for no density limits, but height limits of 5 storeys

Challenges - Innovation

- The Alliance is trying to create a totally new paradigm for a City Centre, in Australia;
- Always going against tried and tested policies that have worked well?
- Nearly every aspect of the project is having to innovate;
- Innovation requires a lot of workshops (Alliance holding a 3 day intersection workshop to change standards); and
- Helpful to have consultants from out of town, however costs over the life of the project can be high.

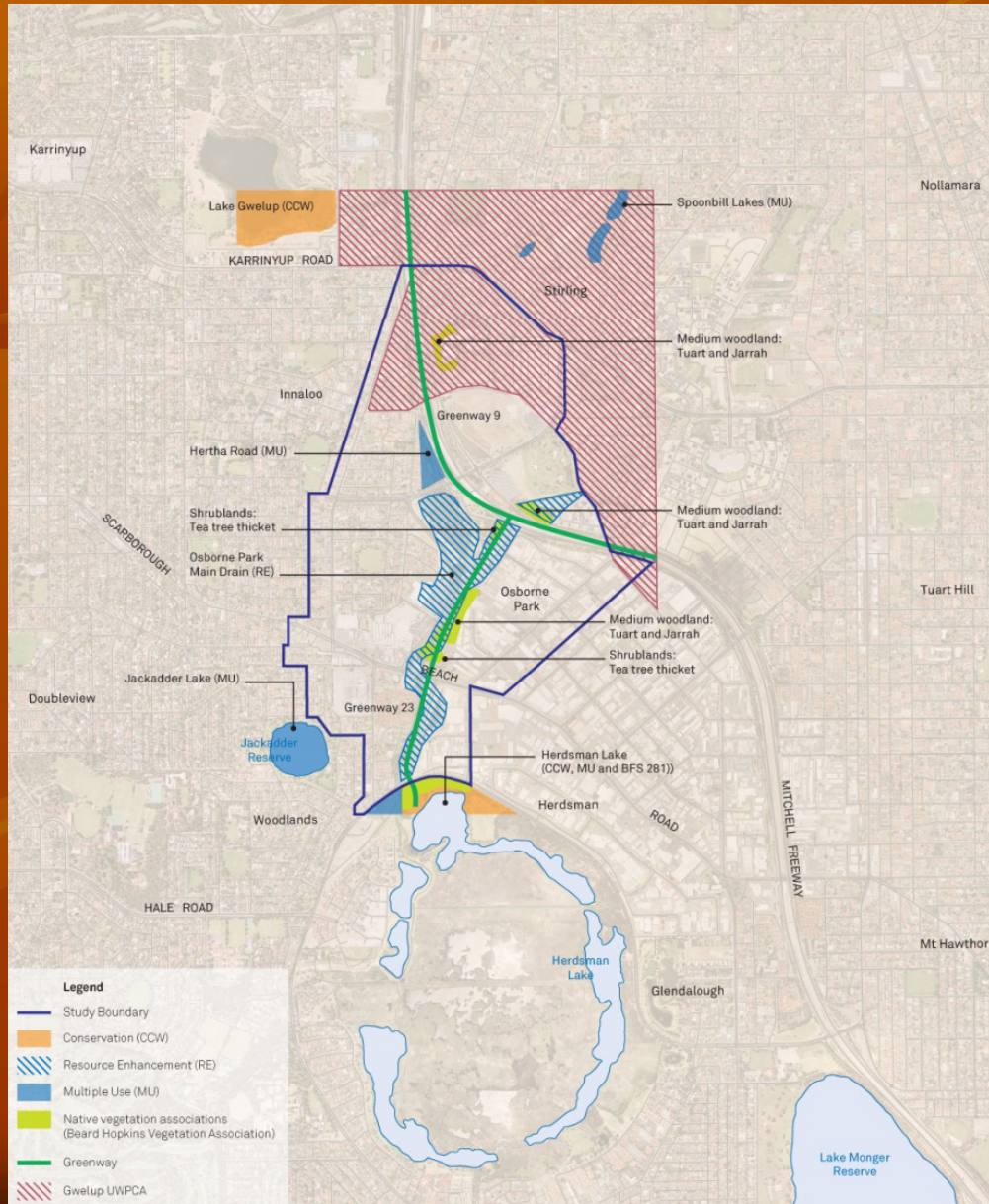
Challenges – Alternative Transport



- Road network designed for 60% of trips by car, currently 85%;
- Light rail provides boost to get more people out of cars (6% trips by public transport currently)
- Unlikely to get funding from State
- Investigating other financial models including special area rates in return for yield increase;



Challenges - Environmental



- Rubbish Tip;
- Contaminated Ground & Surface Water;
- Acid Sulphate Solis;
- Floodplain;
- Climate Change; and
- Peak Oil.

Challenges - Servicing

- **Approx \$450 million worth of new utilities required for servicing;**
- **Alliance is seeking alternative solutions (green infrastructure);**
- **Distributed Systems require new operators that do not exist.**

Challenges - Funding

- **Approx \$250 million worth of up front infrastructure required;**
- **Treasury's Gateway Process is mainly focussed on the financial bottom line;**
- **Government unlikely to have the required capital to invest in this project in the short term, but does have land; and**
- **Alliance may seek EOI from the private sector and see if they will build the infrastructure in return for access to Local and State Govt land (value between \$300 - \$500 million)**

Challenges – Residential Development

- Private sector believes it is not viable to construct residential in City Centre;
- Construction cost for apartments in Perth are nearly double that in the Eastern States (\$5000m²);
- Private sector only wants to build large office buildings (govt office of 40,000m² planned for 2013); and
- Private sector will not mix residential into large office buildings due to strata title.

Challenges - Architectural Design

- Most developers, builders and architects want open slather on design;
- Community is wanting some uniformity or theme relative to climate and culture; and
- Council generally supportive of communities wishes.